

**new
courts**

**Space for ideas:
A new work environment
in the centre of Berlin**



An architectural statement and space for new ideas.

Imagine a workplace inspired by entrepreneurial spirit and creative energy – we've envisioned it, and now we're building it! New Courts embodies impressive contemporary architecture and a flexible office space concept spread across 20,000 square metres and five building wings, catering to the needs of the tenants. With all the conveniences of modern office architecture, New Courts includes a boarding house as a residential option for mobile personnel and is located in the middle of Wedding, one of Berlin's most vibrant neighbourhoods.





Sustainable & excellence certified

New Courts was awarded the DGNB GOLD certification.



Lighting & outdoor areas

Windows on all sides, a spacious rooftop terrace, and 3 courtyards with greenery.



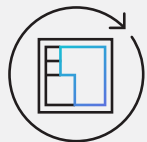
A bold entry & great reception

5 lobbies guarantee flexibility and individual reception options.



Arrival & departure

10 rail, subway, and bus stations in the direct vicinity ensure convenient connections.



Great & small

330 to 20,000 square metres offer enough space for dreams of every scope and scale.



Bikes & cars

A pleasant arrival thanks to 250 parking spaces for cars and over 200 covered bicycle spaces.



Air conditioning & comfort

Cooling capacity of 130 W/m² provides a comfortable climate.



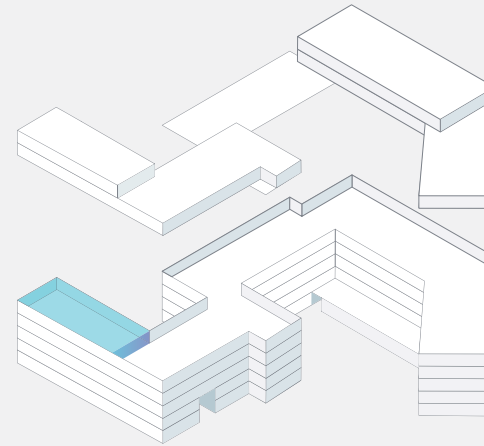
Completion: 2021

New Courts is expected to be completed in 2021.

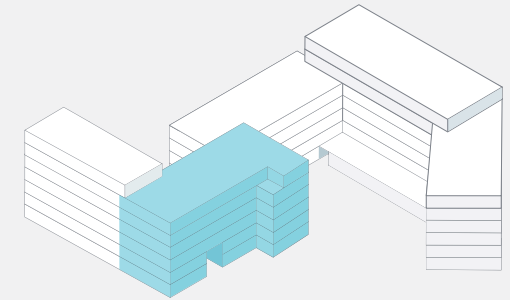
Flexibility and freedom for ambitious businesses

The flexible and efficient office space concept at New Courts is designed for sustainability and adapts to fit the individual needs and desires of the tenants – now and in the future. The freedom to change the floorplan allows businesses different, tailor-made work-environment scenarios, from individual offices to open office landscapes.





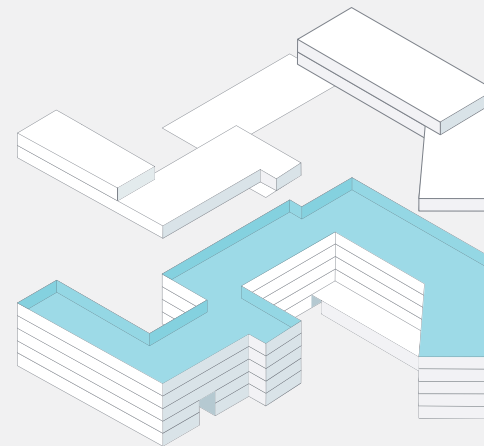
Smallest unit
approx. 300 m²



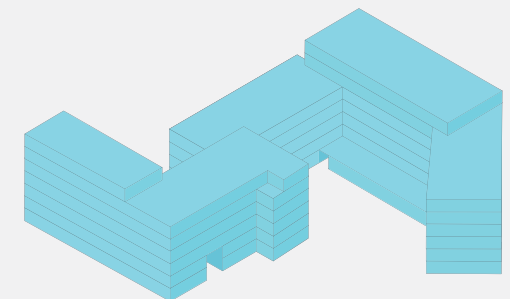
Entire wing
approx. 2.300–6.300 m²

One building, multiple possibilities: The architecture of New Courts offers options for numerous usages.

Whether you're a small business or someone looking for a new headquarters: New Courts offers over 20,000 square metres of office space spread across 7 floors and suitable for the most diverse requirements thanks to variable usage models. Everything is possible, from a compact 330-square-metre unit to an entire floor, a vertical building-in-building solution with its own entrance or the rental of the entire office complex.



Standard floor
approx. 3.800 m²

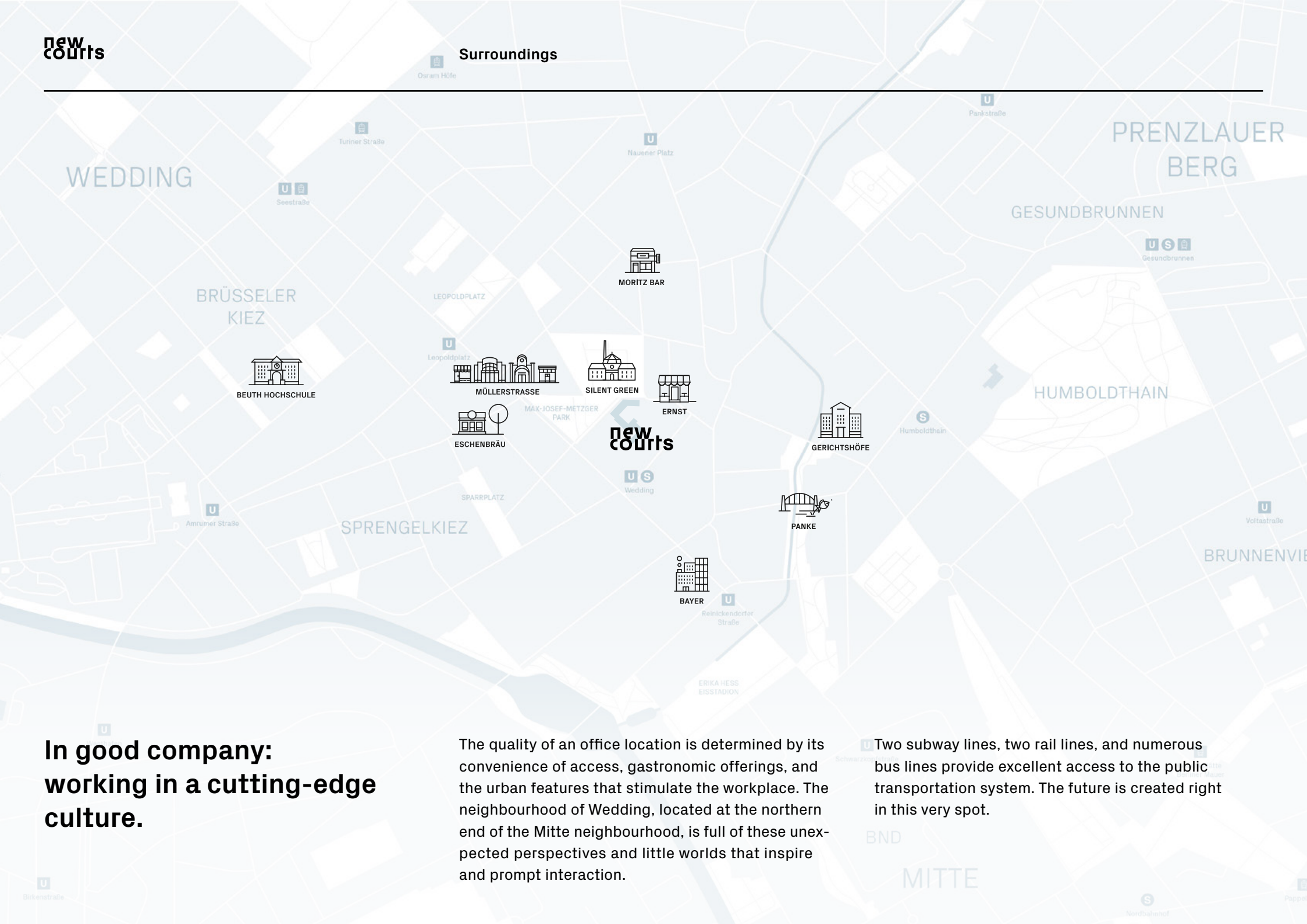


Entire building
approx. 20.000 m²

New Courts boarding house: apartments for mobile employees.

Work today is no longer tied to one location. Businesses and their employees operate digitally, globally and often in a project-based way. That's why temporary housing options are part of a flexible work environment for many companies. With an integrated boarding house, New Courts offers its tenants the ideal solution for providing mobile or newly hired employees with comfortable temporary housing – in the direct vicinity of their workplace and in one of Berlin's most exciting neighbourhoods.





Surroundings

**In good company:
working in a cutting-edge
culture.**

The quality of an office location is determined by its convenience of access, gastronomic offerings, and the urban features that stimulate the workplace. The neighbourhood of Wedding, located at the northern end of the Mitte neighbourhood, is full of these unexpected perspectives and little worlds that inspire and prompt interaction.

Two subway lines, two rail lines, and numerous bus lines provide excellent access to the public transportation system. The future is created right in this very spot.



Beuth

Study the future! At Beuth University of Technology in Berlin, you can do just that, along with 12,000 students, and 290 professors in roughly 70 majors. The university sees itself as a home for science and a source of innovation for the whole region.



Moritz Bar

If you want to try a gin with homemade tonic, or just have a wild night of dancing, a visit to Moritz Bar is in order. The bar has existed for 5 years and has quickly become one of the most important and animated parts of its Wedding neighbourhood.



Panke

There isn't much about Wedding that is rural, but along the banks of the Panke River, meadows, trees, and wildlife provide little oases of calm in the midst of turbulent city life.



Eschenbräu

Brewery, distillery, bar and traditional beer garden: Eschenbräu, located near Leopoldplatz, is many things – but never boring. Craft beer was sold here long before the term existed. It's a meeting point, and not just for beer lovers.



Silent Green

Once a crematorium, today Silent Green is a cultural centre, with an illustrious tenant collective: The Harun Farocki Foundation, the Arsenal film archive, SAVVY Contemporary Gallery, and others host many events throughout the year – with culinary support from the in-house restaurant Mars.



Bayer

The Schering business headquarters from the 1970s is one of the most striking building complexes in Berlin. Now a subsidiary of the pharmaceutical giant Bayer, more than 5,000 people work here.



Müller Street

Müller Street is a lifeline and the main commercial street in Wedding. Flourishing retail spaces, shopping centres and movie theatres in and around Müller Street lend the district its urban character. Many small cafés and restaurants are also scattered throughout the neighbourhood.



Gerichtshöfe

From the chemical factory that once manufactured Berlin's gas mantles, to art and cultural institutions: The Gerichtshöfe have a rich history behind them, and today they are home to more than 30 artists who hold events on the premises year round.



Ernst

Radically small, radically fresh: Since its opening, Canadian Dylan Watson-Brawn's restaurant Ernst has enthralled the Berlin food scene. Those who want to enjoy this regional cuisine will require a bit of patience: To claim one of the restaurant's 12 seats, you'll need to buy a ticket through Ernst's online system.

Object Address

Gerichtstraße 48-49
13347 Berlin

Do you have questions?

If you would like further information on the project, call us or contact us by email. We'll be in touch as quickly as possible.

T +49 151 670 13 989
contact@newcourts.net
www.newcourts.net

Gerichtstraße 48-51 GmbH
Spichernstraße 24
10777 Berlin